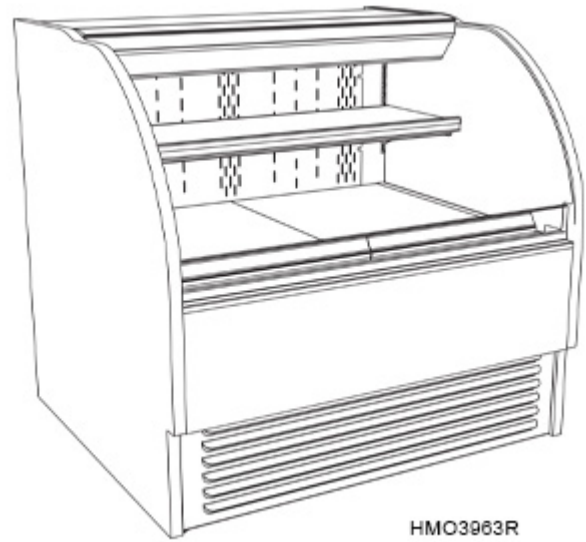


- **HMO3936R** 38-3/4"L x 34-1/8"D x 37-3/4"H
- **HMO5136R** 50-3/4"L x 34-1/8"D x 37-3/4"H
- **HMO7536R** 75-1/8"L x 34-1/8"D x 37-3/4"H

### Included

- Breeze w/EnergyWise s/c refrigeration
- Clear glass shelves, lighted (LED 3500K)
- Compressor air rear intake, front discharge. Toe kick cannot be blocked
- Condensate pan (self-contained refrig. only)
- Flat front panel
- Full end panel w/mirror interior
- Integrated average product temperature of 40°F or less
- LED 3500K top & shelf lights
- One year parts & labor; 5 year compressor warranty
- Open reach-in front
- Upper & lower rear areas white



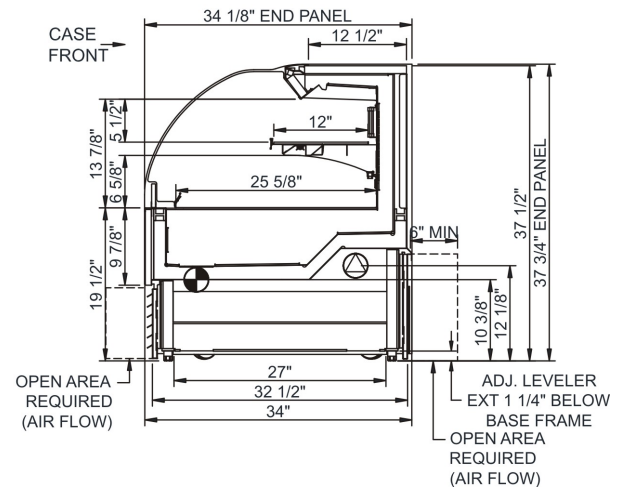
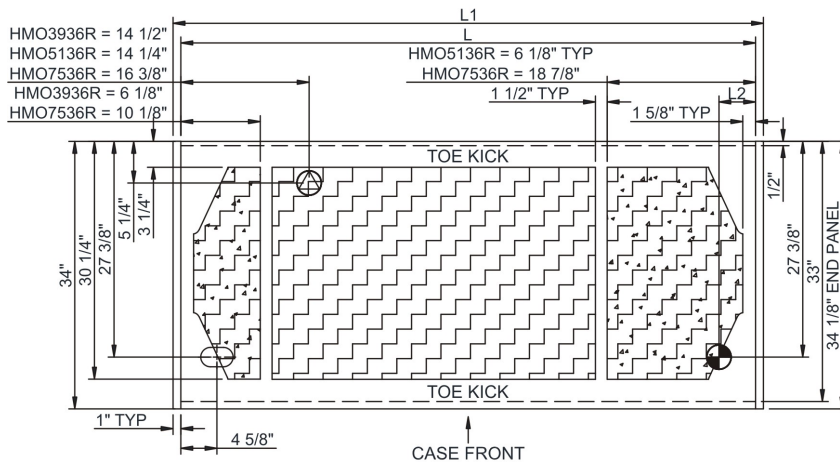
Specify	Standard Features	Additional Options
<b>EXTERIOR COLOR</b>	<ul style="list-style-type: none"> <li>Laminated (non-premium) Confirm pattern/grain direction</li> </ul>	<ul style="list-style-type: none"> <li>Laminated (premium) Confirm pattern/grain direction</li> <li>Stainless steel (includes rear of case)</li> </ul>
<b>INTERIOR COLOR</b>	<ul style="list-style-type: none"> <li>Black</li> </ul>	<ul style="list-style-type: none"> <li>Stainless steel</li> <li>White</li> </ul>
<b>REAR EXTERIOR COLOR</b>	<ul style="list-style-type: none"> <li>Painted - White</li> </ul>	<ul style="list-style-type: none"> <li>Painted - Black</li> <li>Stainless steel (w/stainless ext. only)</li> </ul>
<b>TRIM COLOR</b>	<ul style="list-style-type: none"> <li>Black</li> </ul>	<ul style="list-style-type: none"> <li>Silver</li> </ul>
<b>BASE</b>	<ul style="list-style-type: none"> <li>Levelers</li> </ul>	<ul style="list-style-type: none"> <li>6"H legs</li> <li>Casters (n/a with remote)</li> </ul>
<b>UPPER REAR</b>	<ul style="list-style-type: none"> <li>Solid back panel</li> </ul>	<ul style="list-style-type: none"> <li>Clear glass rear sliding doors w/o lock</li> </ul>
<b>ELECTRICAL CONNECT</b>	<ul style="list-style-type: none"> <li>6' Straight blade power cord (self-cont.)</li> </ul>	<ul style="list-style-type: none"> <li>6' Locking power cord (self-cont.)</li> <li>Electrical leads (remote)</li> </ul>
<b>REFRIGERATION</b>	<ul style="list-style-type: none"> <li>Breeze w/EnergyWise s/c refrigeration</li> </ul>	<ul style="list-style-type: none"> <li>Note: Remote doesn't incl Conds unit. Floor drain reqd.</li> <li>Remote w/thermostat, solenoid &amp; TXV</li> </ul>
<b>MISCELLANEOUS</b>		<ul style="list-style-type: none"> <li>Rear door lock</li> <li>Second year parts &amp; labor warranty (excludes compressor)</li> </ul>
<b>ACCESSORIES</b>		<ul style="list-style-type: none"> <li>2"H Display steps</li> <li>Clean Sweep® coil cleaner (n/a w/remote)</li> <li>Night curtain, retractable, non-locking</li> <li>Price tag molding (matches interior color)</li> <li>Removable wire security cover, locking</li> </ul>

**Intended Environment:** Type I - Designed to operate in ambient conditions of 75°F with 55% relative humidity unless noted otherwise in system information below.

Zone	Intended Product To Be Displayed	Warmest Avg Prod Temp ° F
1	Packaged refrigerated products	40

**PLAN VIEW**

**SIDE VIEW**



**NOTE: ALL DIMENSIONS APPROXIMATE**

⊕ ELECTRICAL JUNCTION BOX  
(SUPPLIED WITH 6" LEADS OR POWER CORD).  
⊖ LOCATION OF DRAIN TUBE FOR REMOTE REF.  
ONLY (SUPPLIED WITH 3/4" OR 1 1/2" PVC TUBE).

⊕ REFRIGERATION LINE CONNECTION.  
⊖ REMOTE FLOOR SINK & UTILITIES  
ACCESS AREA.

⊕ SELF-CONTAINED CASE SERVICE ACCESS AREA.  
⊖ DRY CASE SERVICE ACCESS AREA.

**Model Technical Specifications**

Model Technical Specifications																
Model	L"	L1"	L2"	System Circuit Volts			Phs	Freq	Amps ***	Watts	Wires	NEMA Plug	SST	Conv. Rack BTU/H	Para. Rack BTU/H	Est Wt
HMO3936R	36.75	38.75	4.63	Remote(Type I)	Circuit #1	110-120	1	60	1.15	95	2+G	Leads Multiple	24.00	2544	2356	650
				Self-Contained (R513A)	Circuit #1	110-120	1	60	14.10	1,064	2+G	5-20P or L5-20P	N/A	N/A	N/A	
HMO5136R	48.75	50.75	4.63	Remote(Type I)	Circuit #1	110-120	1	60	1.57	146	2+G	Leads Multiple	20.00	2592	2400	750
				Self-Contained (R449A)	Circuit #1	110-120	1	60	16.00	1,472	2+G	5-20P or L5-20P	N/A	N/A	N/A	
HMO7536R	73.13	75.13	4.63	Remote(Type I)	Circuit #1	110-120	1	60	2.23	210	2+G	Leads Multiple	20.00	3974	3680	950
				Self-Contained (R449A)	Circuit #1	208-240	1	60	11.98	1,935	2+G	6-20P or L6-20P	N/A	N/A	N/A	

\*\*\* Does not include electric defrost on freezer models.

**Regulatory Approvals:**

All Models  
 Accordance with AHRI Std 1200  
 ETL Listed to UL 471  
 ETL Listed to CAN/CSA 22.2 No. 120  
 ETL Sanitation to NSF/ANSI 7



In Accordance with  
**AHRI Std 1200**

**DOE 2017**  
Energy Efficiency  
Compliant

**Important Notes:**

- 1) ELECTRICAL NOTE: If GFCI is required, a GFCI breaker MUST be used in lieu of a GFCI receptacle
- 2) 35" Minimum door entry clearance required (without shipping skid).
- 3) Units are supplied with levelers which must be adjusted during installation to ensure the unit is level and plumb.

**⚠ WARNING:** This product can expose you to chemicals, including Urethane (Ethyl Carbamate), which are known to the State of California to cause cancer and birth defects or other reproductive harm. For more information go to [www.P65Warnings.ca.gov](http://www.P65Warnings.ca.gov).

**Note: Information is subject to change at any time. Visit [www.structuralconcepts.com](http://www.structuralconcepts.com) for the most current specs.**

21867727

Revised 1-13-2022